



Rainbow Beach Survey

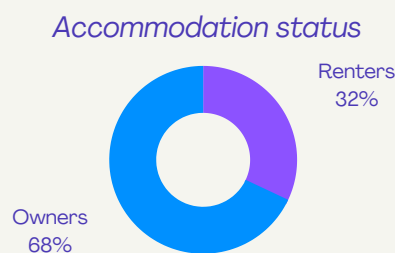
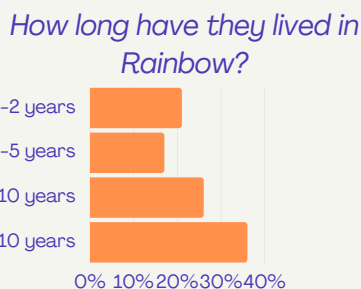
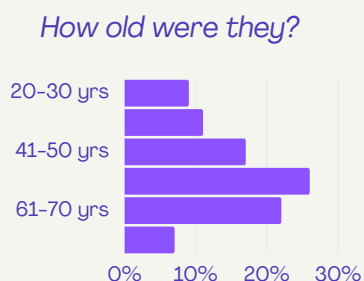
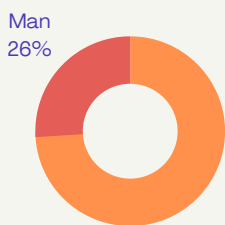
This is a summary of the data collected as part of the Rainbow Beach Community Vision and Resilience survey

SURVEY PARTICIPATION

The survey was seen over 151 times and completed by 47 Rainbow Beach residents



SOME DETAILS ABOUT THE RESPONDENTS



A VISION FOR THE FUTURE OF RAINBOW BEACH

Rainbow Beach respondents described what they value the most in Rainbow and the change they want to see in the next 20 years



What respondents value the most in Rainbow

SMALL COMMUNITY
 VERY SPECIAL PLACE
 PEACE & QUIET
 OUTDOOR ACTIVITIES LIFESTYLE

Why are those things valuable?

- Connection to nature and locals
- Quality of life
- Rainbow is unique
- Away from bigger towns craziness
- A healthy and happy place to live

What are the challenges facing Rainbow?

MOUNTING PRESSURES
 ENVIRONMENTAL SERVICES
 DAMAGE POPULATION CHANGE
 TOWN PLANNING
 INCREASED TOURISM
 HIGH COST OF LIVING
 LACK OF SERVICES

What are the changes you would like to see?

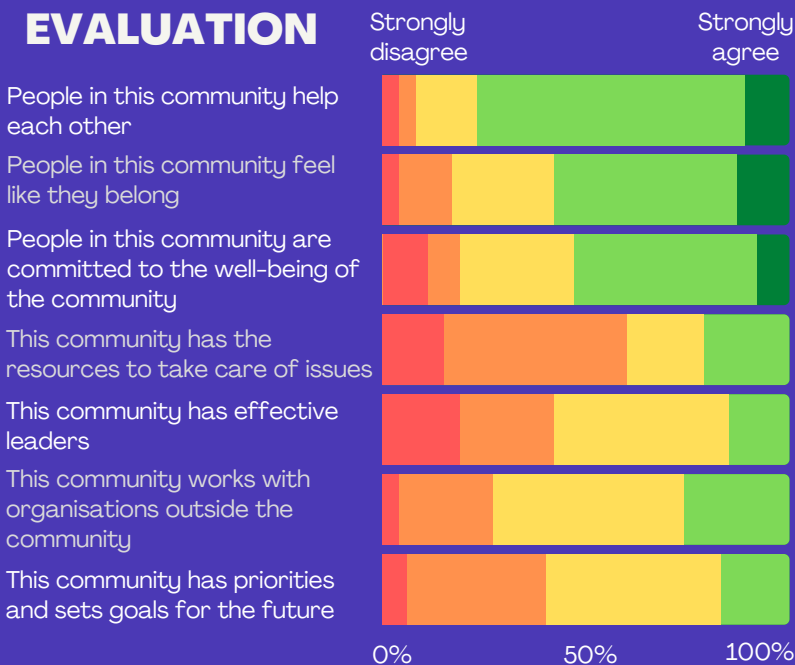
- Town planning to match the uniqueness of the town and its surrounds
- Reduce the impact of tourism on housing, infrastructure and natural assets
- Improves services most notably policing, healthcare, and youth

RAINBOW BEACH COMMUNITY RESILIENCE

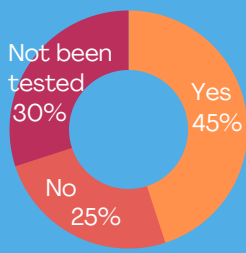
Rainbow Beach respondents shared their views on Rainbow's community resilience



BRIEF COMMUNITY RESILIENCE EVALUATION



IS RAINBOW RESILIENT?



The things that make Rainbow resilient

- Diverse, adaptable, and resilient residents
- Residents willing to help
- The community has leaders

The things that hinder Rainbow resilience

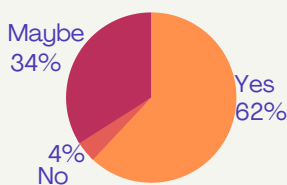
- Community division
- Lack of planning, coordination and leaders
- Lack of government and agencies support
- The community is not being heard and feels far away from decision-makers

NEXT STEPS

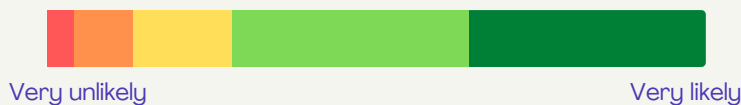
This project aims to build a vision and resilience for Rainbow Beach with, by and for the residents of Rainbow Beach. Come and join us for future events.



Would public consultation be valuable to develop a vision and resilience for Rainbow Beach?



Would you participate in public meetings?



For further details or to get involved contact Audrey Cetois at a.cetois@uq.edu.au

